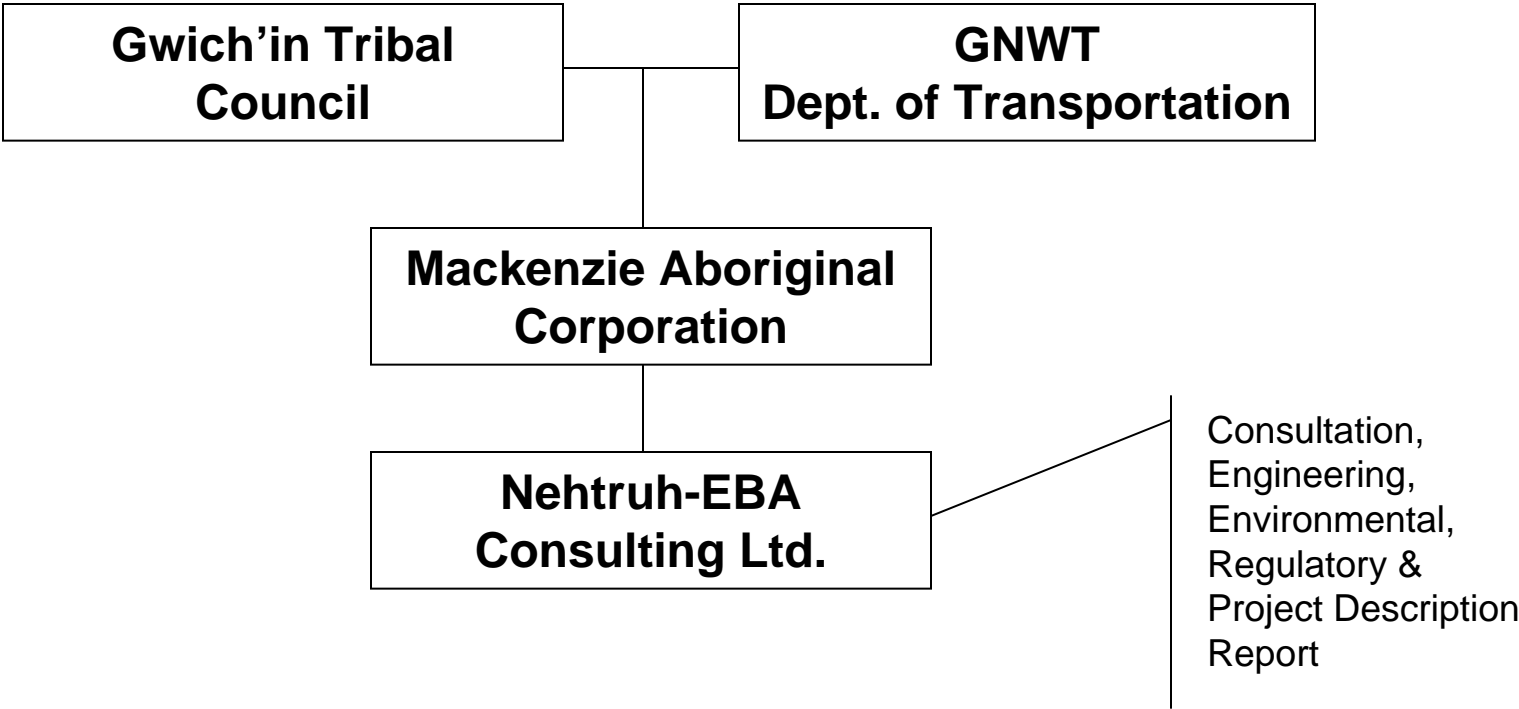

Mackenzie Valley Highway Gwich'in Settlement Area

Community & Regulatory Consultations
June 2010

Meeting Overview

- **Opening Prayer**
- **Introductions**
- **May – July 2010 Consultations – Purpose and Approach**
- **Our Starting Point**
 - **History of the Highway**
 - **Proposal to Move Forward in 2010**
 - **GTC-GNWT: Making Decisions Together**
- **Questions, Comments & Suggestions**
- **Discussion Around Maps**

Mackenzie Valley Highway Team



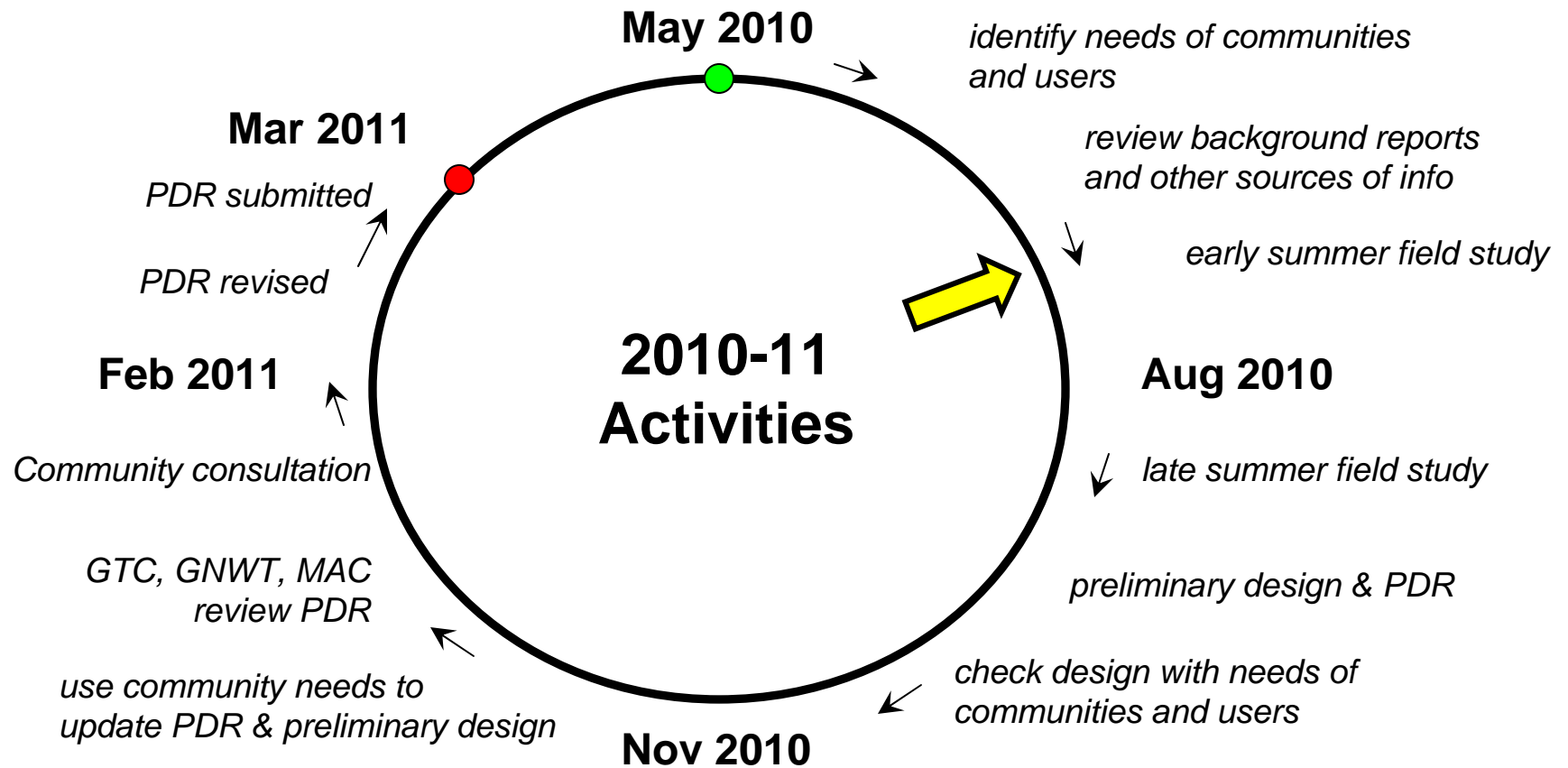
Partnership Approach

- **The Mackenzie Valley Highway 2010 is a partnership between Gwich'in Tribal Council (GTC) and GNWT, Department of Transportation (DOT)**
- **The Gwich'in Settlement Area (GSA) section of the Highway makes up 145km of the >800km Mackenzie Valley Highway corridor**
- **A future Highway corridor was designated in the *Gwich'in Comprehensive Land Claim Agreement Schedule XVII (17)***
- **A shared vision of a *Transportation Corridor* to minimize the environmental footprint in the GSA**

Project Approach

- **Planning must be completed before construction**
- **The Project Description Report (PDR) is a significant part of early planning:**
 - **Consultation**
 - **Environmental, Archaeological & Engineering Assessment**
 - **Preliminary Highway Design**
- **From PDR to Construction:**
 - **Environmental Screening (and other applicable regulatory processes)**
 - **Obtain Funding**
 - **Complete Detailed Design**
 - **On-going Community Consultations**
 - **Construction**

Making Decisions Together



Purpose of Initial Consultations

***“What do we need to understand about the land
and the people who live here to make wise decisions about the
construction of the Mackenzie Valley Highway?***

Where should it be built and what it should look like?”

Planning

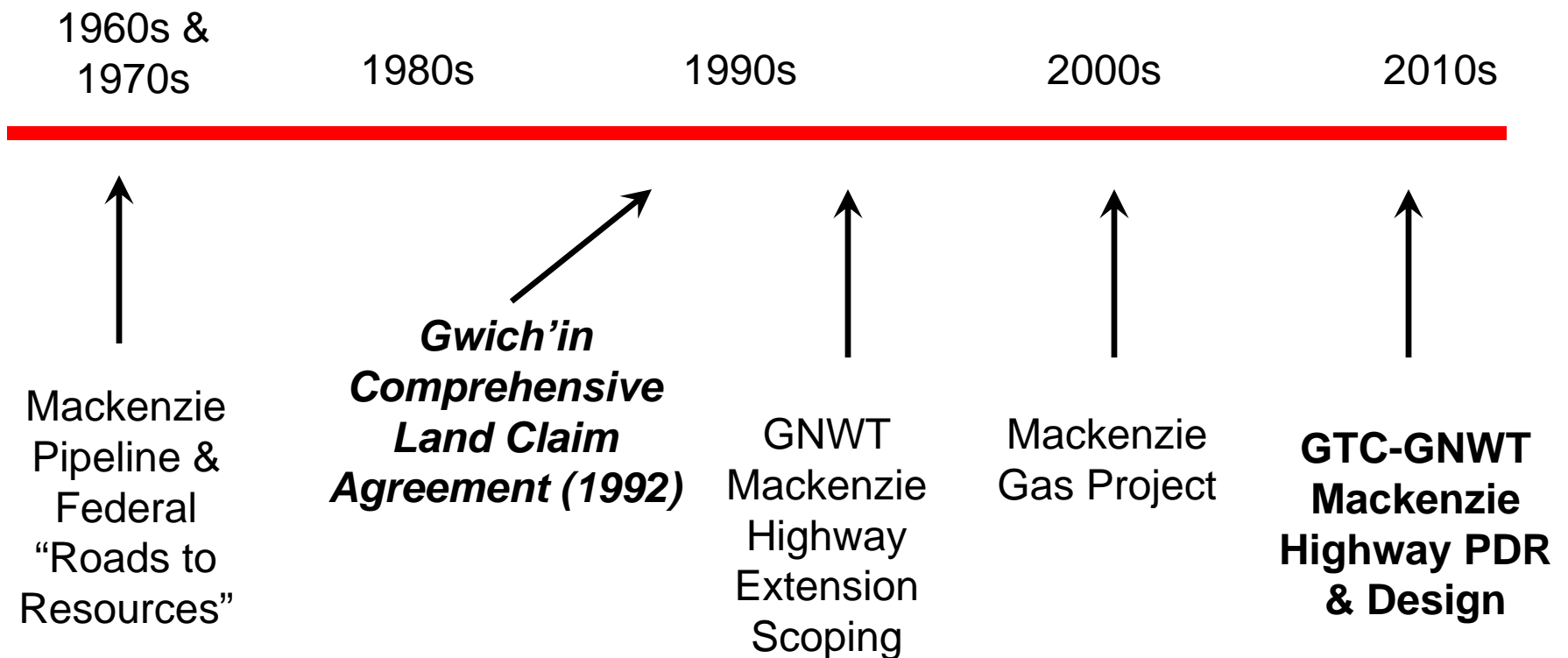
- **History:**
The Highway and Associated Development Planning
(1970s to present)
- **Where are we going?**
The Proposal to Move Forward in 2010
- **GTC-GNWT: Making Decisions Together**
Identifying what is most important as we plan the Mackenzie
Valley Highway

History:

Looking Back to Help Plan The Way Forward

- **Gwich'in Land and Culture**
- **Mackenzie Valley Highway (1970s, 1990s)**
 - 1972-76 – Public Works Canada (PWC) Studies
 - Mid-1990s – Highway Constructed to Wrigley
 - 1999 – GNWT Mackenzie Valley Highway Extension Scoping Study
- **Mackenzie Gas Project (2000s)**
- **Mackenzie Valley Highway (2010)**

Recent Development Planning



Community Consultation

- The Highway 'Scoping' study identified that the communities wanted to be consulted:
 - **Before approval**
 - **Before construction**
 - **Throughout the Highway's lifespan**
- Discussing with leaders, elders and communities at the beginning.
- As a first step in a long journey, we are meeting with:
 - Fort McPherson – Tuesday, May 25, 2010
 - Aklavik – Thursday, May 27, 2010
 - Inuvik – Friday, May 28, 2010
 - Tsiigehtchic – July 2010

Possible Discussion Points

- Hunting, trapping, fishing
- Wildlife and habitat
- Stream crossings
- Erosion, slumping
- Permafrost
- Material sources
- Cumulative effects
- Traditional use
- Camps & cabins
- Traplines
- Social and cultural adaptation
- Heritage and archaeological sites
- Tourism
- Safety
- Training & employment
- Others?